



4K HD DASH CAMERA

WITH 2.4" SCREEN, WIFI, GPS & ADAS



KPT-1240
USER MANUAL





CONTENTS

1.0 CAUTION	4
1.1 Battery Warning	5
1.2 Product Information	6
2.0 INTRODUCTION	6
2.1 Package Contents	7
2.2 Product Overview	8
3.0 BUTTON FUNCTIONS AND INDICATORS	9
4.0 GETTING STARTED	10
4.1 Inserting A Micro SD Card	10
4.2 Removing A Micro SD Card	11
4.3 Installing The KPT-1240	11
4.4 Installing The Rear Camera	12
4.4.1 Installation Guide	12
4.4.2 Rear Camera Wiring Diagram	14
4.4.3 Rear Camera Features	14
5.0 CONNECTING TO POWER	15
6.0 LED INDICATOR	16
7.0 POWERING THE KPT-1240 ON/OFF	16
7.1 Auto Power On/Off	16
7.2 Manual Power On	17
7.3 Manual Power Off	17
7.4 Reset The Car DVR	17
8.0 INITIAL SETTINGS	17
8.1 Formatting The Inserted Micro SD Card	17
8.2 Setting The Time And Date	18

9.0	REAL TIME ROAD ALERTS.....	18
9.1	Speed Camera Alert	19
9.2	Blackspot Alert	19
9.3	School Zone Alert	19
9.4	Railway Crossing Alert	19
9.5	Check speed Alert	19
10.0	INTERFACE	20
10.1	Video Mode	20
10.2	Video Menu	21
10.3	Setup Menu	24
10.4	Photo Mode	26
11.0	VIDEO/PHOTO PLAYBACK.....	28
12.0	SOFTWARE PLAYBACK	29
13.0	INSTALLING APP ON SMART PHONE.....	29
14.0	WARRANTY TERMS & CONDITIONS	30
15.0	NOTES	31

1.0 CAUTION

- Ensure you are using your Car Dash Cam within your countries' road laws. Please make sure you are familiar with your local road legislation before use.
- Avoid leaving your Dash Cam in direct sunlight for extended periods of time in an unventilated space.
- Please set time and date before you use this device to record.
- The notifications given by the Car Dash Cam are suggestions only, please drive to the actual conditions.
- The results of GPS positioning are only for reference. The Car Dash Cam will lose GPS positioning abilities when signal is blocked (e.g. driving through tunnels, enclosed car parks).
- GPS positioning accuracy may vary depending on weather and surroundings such as dense cities, tunnels, or forests. GPS satellite signals cannot pass through most solid materials. Tinted windows may also affect the GPS signal.
- The values displayed in this system, such as speed, position, and the distance warning, may be affected by the surrounding environment.
- The system is to be used only for non-commercial use, within the limits permitted by the relevant laws.
- Avoid using the Car Dash Cam near any devices that emit radio interference (e.g. Microwave Ovens).
- It is considered normal operation for the Car Dash Cam to get warm during use.

1.1 BATTERY WARNING

- Always charge the Car Dash Cam using the provided charger. Improper charging of the Car Dash Cam may result in failure of the internal battery.
- Never dismantle the Car Dash Cam or expose the internal battery.
- Do not dispose of the Car Dash Cam in fire.
- Dispose of the Car Dash Cam observing local regulations being mindful of the internal battery.
- Do not attempt to replace or expose the internal battery.

NOTES ON INSTALLATION

- It is advised that the Car Dash Cam is installed near the rear view mirror, at the top centre of the windshield for optimal operation.
- Make sure that the lens is within the range of the windscreen wiper to ensure a clear view when it rains.
- Do not touch the lens with your fingers. Finger prints left on the lens will result in unclear videos or photos. If photos or videos are blurred, please clean the lens gently with a microfibre cloth.
- Do not install the device on a tinted window. Doing so may damage the tint film and restrict the Car Dash Cam's GPS signal.
- Make sure that the installation position does not hinder or block the field of view or GPS signal.
- Only use the included cable to power the Car Dash Cam.
- The KPT-1240 is designed to be constantly connected to the included power supply, and is NOT designed to be used solely with the camera's built in battery.

1.2 PRODUCT INFORMATION

For latest manual and product updates please visit our website at www.kapturecam.com.au or www.kapturecam.co.nz.

2.0 INTRODUCTION

Thank you for purchasing a Kapture Dash Cam. Please read through instructions before attempting to install or use this product.

This User guide is designed to assist with the day to day operation of the KPT-1240.

Before attempting to use or install your Kapture KPT-1240, please ensure you have read and understood all of the safety notes below.

- Avoid leaving your KPT-1240 in direct sunlight for extended periods of time in an unventilated space.
- Do not expose your KPT-1240 to liquids, excessive dusty conditions or temperatures exceeding 60°C.
- Only use the included cables to power and charge the KPT-1240.
- Please do not attempt to adjust the KPT-1240 position or settings whilst you are operating your vehicle.
- Please clean the windshield thoroughly removing all dust and dirt particles before fixing the adhesive mount.
- Since the mount sticks onto the windshield using a 3M adhesive, please ensure that the position of the camera is best located to capture the maximum viewing area.

- We suggest you to power-on the dash camera and test the playback image on screen first prior to removing the 3M tape for installation.
- Only remove the 3M tape when you are satisfied with the dash camera placement and image position are delivering the best possible image and view of the road ahead.
- Ensure you are using your KPT-1240 within your countries' road laws. Please make sure you are familiar with your local road legislation before use.

2.1 PACKAGE CONTENTS



KPT-1240
Dash Cam



Dash Cam
3M Mount



Spare 3M
Adhesive



Car
Charger

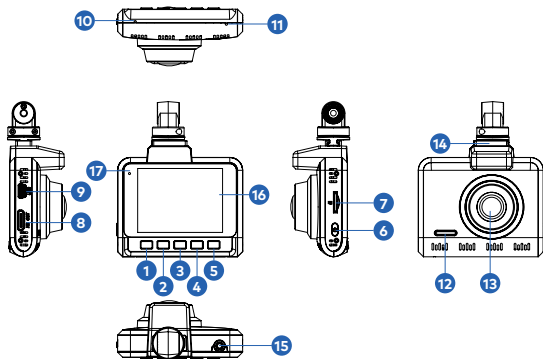


User
Guide



Electrostatic
Film x 2

2.2 PRODUCT OVERVIEW





- | | |
|--------------------------|-----------------------------|
| 1. Menu/Mode Button | 10. Reset |
| 2. Up Button | 11. Microphone |
| 3. Lock Recording Button | 12. Speaker |
| 4. Down Button | 13. Lens |
| 5. Rec/Ok Button | 14. Slot for Mount |
| 6. ON/OFF Power Button | 15. Cam/Rear Camera In* |
| 7. Micro SD Card slot* | 16. LCD Screen |
| 8. HDMI Port | 17. Recording Indicator LED |
| 9. Mini USB Power socket | |

3.0 BUTTON FUNCTIONS AND INDICATORS

No.	Key	Instruction
M	Menu / Mode Button	Press to open the Video Mode, Press again to open General Settings Menu. Press and hold to switch between Record, Photo and Playback mode.
△	Up Button	In the Settings menu use the Up Button to toggle between the settings. In Video Mode press and hold to switch on/off in-built Microphone. In Video Mode press to Zoom in.
⏸	Lock Recording Button	When DVR is recording, Press Lock Button to lock the current file. Locked file won't be over recorded during loop recording. Also turns on/off WIFI.
▽	Down Button	In Settings menu use the down key to toggle between the settings. In Video Mode Short Press to Zoom out.
OK	Rec / OK Button	Press the OK Button to start/stop video recording in Video mode. Press the OK Button to take photo in Camera mode. Press the OK Button to play/pause current video on playback mode.
⏻	On / Off Power Button	Press and hold the Power Button to Power Off the Device. Press once to switch LCD Screen Off however DVR will continue recording.

BUTTON FUNCTIONS AND INDICATORS CONT'

No.	Key	Instruction
	Micro SD Card Slot	Micro SD Card Slot. Please use Maximum 128 GB, UHS Class 3 and above.
<i>HD OUT</i>	HDMI Port	Connect to computer or TV to play back recorded videos on the SD card.
	Mini USB Power Socket	Mini USB Power cable to connect with power adapter provided in the packaging.
Mic	Microphone	Microphone position.
Reset	Reset	Press to reset to factory settings.
12	Speaker	Speaker vent.
13	Lens	Camera lens.
14	Slot For Mount	Slot to insert your 3M Mount supplied in the box.
15	Rear Camera In	For plugging in your rear camera. (Sold Separately)
16	LCD Screen	LCD Display Screen
17	Recording Indicator LED	Indicator to show DVR is recording

4.0 GETTING STARTED

4.1 INSERTING A MICRO SD CARD

With the Car DVR turned off and the screen facing towards you insert your Micro SD Card (not included) in the slot on the

right side of the KPT-1240 with the text on the Micro SD card away from you. Push the memory card in until a click is heard.

4.2 REMOVING A MICRO SD CARD

Ensure that the KPT-1240 is powered off, and with your thumbnail press in the Micro SD Card until a click is heard. The Micro SD Card will eject from the KPT-1240 when released.

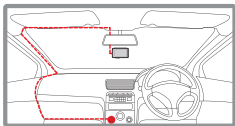
NOTE:

- Micro SD Card is not included.
- Do not remove or insert the memory card while the Car DVR is turned on as this may damage the memory card or corrupt the memory cards stored data.
- Please use a UHS Class 3 or higher rated micro SD card with a maximum capacity of 128GB.
- Please format the Micro SD card before the initial use.
- When removing the memory card, be careful as the card may eject quickly.

4.3 INSTALLING THE KPT-1240

1. **OPTIONAL:** Remove the protective layer from the Electrostatic film (Provided) and place it on you wind screen. This helps to easily remove the 3M adhesive from your wind screen with out any adhesive residue.
2. Remove the protective stickers from the Car DVR and the 3M mount.
3. Press the mount base firmly against the windscreen and hold for 30 seconds.

4. Insert the power cable adapter onto the dash camera power socket.
5. **(IF RELEVANT)** For customers who have bought the Rear Camera add on please follow Points above and then insert the rear camera in the CAM port on DVR



NOTE:

- It is advised that the KPT-1240 is installed in the centre of the windscreen behind the rear view mirror.

4.4 INSTALLING THE REAR CAMERA

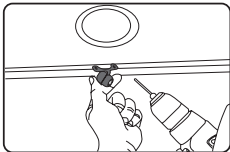
(Rear camera sold separately)

4.4.1 INSTALLATION GUIDE

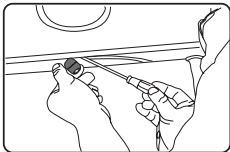
Select a flat and centred location near the number plate lamp at the rear of the vehicle to mount camera.

Attach tape to the bracket of the camera to hold the camera in position while installing, and drill two small holes, one for the first screw, the second to run the reverse camera cable through.

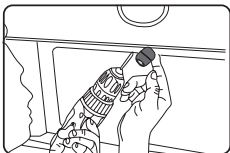
1. Select a flat and centred location near the number plate lamp at the rear of the vehicle to mount camera.
2. Attach tape to the bracket of the camera to hold the camera in position while installing, and drill two small holes, one for the first screw, the second to run the reverse camera cable through.



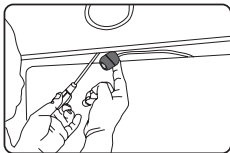
3. Use a screw driver to fix the first screw, leaving the screw loose enough to adjust the camera.



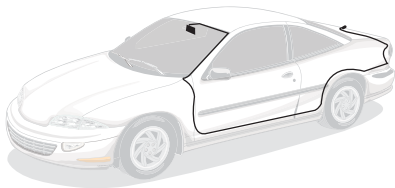
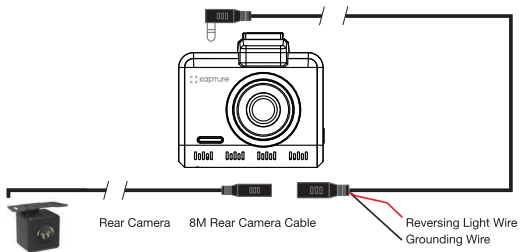
4. Insert the camera wire through the intended drilled hole checking the installation position.
5. Mark the position suitable for the second screw and drill a small hole for it.



6. Fix the second screw and securely tighten both screws.



4.4.2 REAR CAMERA WIRING DIAGRAM



4.4.3 REAR CAMERA FEATURES

(Rear camera sold separately)

After successfully installing and connecting of the rear camera into the main DVR, the rear camera will be displayed on the Dash Cam's 2.4" Screen.

Both Cameras will instantaneously start recording after DVR is powered ON.

Both Front and Rear Camera images will now be displayed on your Dash Camera's 2.4" Screen, you can switch between by using the DOWN Key.

Display can switch between:

1. Full Front Camera view
2. Full Rear Camera view
3. Full Front with small window for Rear Camera

When your vehicle is in reverse gear, the display will change to the Rear Camera view with Reversing Grid Lines to assist the driver when reversing / parking.

NOTE:

- To Support Dual recording the recording resolution of main camera will lower to FHD 1080 at 30 FPS.

5.0 CONNECTING TO POWER

Only use the included charger to power and charge the Car DVR.

1. Once the Car DVR is securely installed on your vehicle's windscreen, plug the DC Power Plug into your vehicle's cigarette lighter.
2. Run the power cable along your vehicle's console and windscreen and plug the USB Micro plug into the Car DVR and the USB A end into the DC Power Plug.

NOTES:

- It is recommended that the Car DVR is installed behind your vehicle's rear view mirror.
- Make sure that the camera view is not obstructed by any window tint or any other objects.
- The KPT-1240 is designed to be constantly powered by the included DC Power Plug. The internal battery is designed to hold saved settings and power the camera when in Park Mode. The battery is NOT designed for primary use.

6.0 LED INDICATOR

- Flashing LED shows camera's internal battery is getting charged and is recording.
- Continuous red shows it is charging but not recording.

7.0 POWERING THE KPT-1240 ON/OFF**7.1 AUTO POWER ON/OFF**

When the Car DVR is correctly installed and connected to your vehicle's 12v power supply, the Car DVR will automatically power up and start recording when the vehicle accessories are activated.

7.2 MANUAL POWER ON

Hold the Power button on the lower right hand side of the camera until the Kapture start up screen appears.

7.3 MANUAL POWER OFF

Press the Power button on the lower right hand side of the car DVR. After powering down the device please wait for 10 seconds before turning the Car DVR back on.

7.4 RESET THE CAR DVR

If the Car DVR does not function normally, try restarting the car DVR. To restart the car DVR, using a small pin press and hold the Reset button on the bottom side of the camera.

8.0 INITIAL SETTINGS

Before using the Car DVR we recommend Formatting the Inserted Micro SD Card and setting the correct Time and Date.

8.1 FORMATTING THE INSERTED MICRO SD CARD

Formatting the Micro SD card will delete all information on the inserted Micro SD Card and prepare the card for use with the Car DVR.

1. Press the OK Button to stop the Car DVR from recording.
2. Short Press the Menu Button twice to enter the Settings/ Setup Menu.
3. Use the UP and DOWN Buttons to navigate the Settings Menu and highlight the Format setting and press the Ok to select
4. Press Ok again to format.

NOTES:

- Menus cannot be accessed while the camera is recording. Please stop the recording before attempting to access the menu.
- Formatting your Micro SD Card will delete all files from the card. Once these files have been deleted you will not be able to recover them.

8.2 SETTING THE TIME AND DATE

Setting the Time and Date allows you to stamp your footage with the time as a reference.

1. Press the OK Button to stop the Car DVR from recording.
2. Short Press the Menu Button twice to enter the Settings / Setup Menu.
3. Use the Up and Down Buttons to navigate the Settings Menu and highlight the Date/Time and press the Ok to select.
4. Use the and buttons to edit the selected digit and the right button to confirm and progress to the next digit. The final field sets the format that the date will be presented in, pressing the OK button with this field highlighted will save the date and time and return you to the settings menu.

9.0 REAL TIME ROAD ALERTS

Your Dash Camera comes with the added feature of providing real time road safety alerts. The alerts will be displayed on the LCD Screen showing your actual live speed, speed limit (if applicable) and distance to the alert.

These alerts can be individually disabled from the settings menu.

To Enter the settings menu

1. Stop Recording.
2. Press Menu Button twice.

**All Alert types are listed below.
(Visual and Audio Alerts can be turned off).**

9.1 SPEED CAMERA ALERT

Will alert you of Speed and Red light cameras at your designated distance. The alert will show the speed limit with you current speed and a count down of the distance.

9.2 BLACKSPOT ALERT

Speed camera alerts you before a high accident zone.

9.3 SCHOOL ZONE ALERT

The School Zone Alerts timing can be changed in the School Zone alert setting.

9.4 RAILWAY CROSSING ALERT

Railway Crossing alert gives you the alert before the railway crossing.

9.5 CHECK SPEED ALERT

Check speed alert will help you to check the speed of your odometer and compare with the check speed alert

NOTE:

- School Alert Zone can be set as per you local laws. Enter a time for both AM and PM, School zone alert will only activate during the set time.
- Distance of alerts to start can be selected from the Setting Menu. Distance can be set to 100M, 200M, 300M, 400M and 500M.

10.0 INTERFACE

10.1 VIDEO MODE

1. **Video Mode**

2. **WDR On**

3. **GPS Signal**

4. **Time:** Total Recording duration (00:00:00)

5. **Resolution:** 4K HD Resolution

6. **Park Mode:** Displays Park Mode is On Or Off

7. **Microphone:** Turns on or off the Microphone

8. **Micro SD Card:** Indicates inserted SD Card

9. **Battery:** Indicates Battery level and charging status

10. **Time:** (00:00:01)

11. **Date:** (01/01/2019)

12. **Lock File:** Current Recorded File Locked indicator

13. **G-Sensor:** The highlighted bar indicated the sensitivity of G-Sensor with 1 Bar indicates Low Sensitivity

14. **EV:** Shows Exposure set level

15. **Motion Detection:** Shows Motion Sensor is On or Off

16. **Loop Recording:** Shows status of Loop recording with time duration



10.2 VIDEO MENU

To enter the Video Menu

1. Press the OK Button to STOP Recording
2. Press the Menu Button

Menu	Select Settings	Description
Resolution	4K @2160P P24 FPS QHD @1240P P30 & P60 FPS FHD @1080P P30 & P60 FPS HD @720P P30 FPS FHD @1080P+ VGA (For Dual Channel)	Higher resolution gives your footage more detail but uses more storage space. Lower resolution saves storage space. Default: 4K @ 2160P
Loop Recording	Off / 3, 5 or 10 Minutes	Loop Recording defines the length of time the KPT-1240 records before creating a new file. Using the Off setting will record the longest possible loops under the file size of 1 GB (around 5 minutes). Default: 3 Mins
WDR	On / Off	Wide Dynamic Range improves the video quality when light intensity is dramatically affected in low light or when facing direct sun light. Default: On

VIDEO MENU CONT'

Menu	Select Settings	Description
Exposure	-2.0/-1.7/-1.3/ 1.0/-0.7/-0.3 /0.0/ +0.3/+0.7/+1.0/ +1.3/+1.7/+2.0	Exposure compensation allows you to adjust and control the level of exposure, when in driving in low light, the exposure value (such as + 1EV, + 2EV) can be increased to highlight the clarity of the picture. Default: 0.0
Motion Detection	On/Off	DVR will stop recording if it doesn't detect any motion and will immediately start recording if it detects motion. Default: Off
Park Mode	On/Off	Park Mode helps to make your car safe by recording the video even when the Engine is switched off. Your DVR will record the incidents when ever it detects an impact and the G-Sensor is triggered. Park Mode will record a maximum of 10 instances during a 24 hour period, once the battery has been fully charged. Default: Off
Microphone	On/Off	Turning this setting off mutes the built in microphone. Default: On

VIDEO MENU CONT'

Menu	Select Settings	Description
Date Stamp	On/Off	Turning this setting off will lead to no date stamp on the recorded video. Default: On
GPS Stamp	On/Off	Turning this setting off will lead to no GPS Coordinates and Speed stamp on the recorded video. Default: On
G Sensor	Off/High/ Medium/Low	To adjust the sensitivity of the G-sensor. High is the highest sensitivity and Low is the lowest. Default: Low
Speed Unit	KM/H MPH	To adjust the speed unit in DVR. Default : KM/H
Alert Distance	100 / 200 / 300 / 400 / 500 Metres	Distance from where alerts will start working. Default: 200 M
ADAS	On/Off	To switch On/Off ADAS. Default: On

10.3 SETUP MENU

To enter the Setup Menu

1. Press the OK Button to STOP Recording
2. Press the Menu Button twice

Menu	Select Settings	Description
WIFI	On/Off	To Switch On/Off WIFI. Default: On
Date/ Time	Set Date and Time	Using the Up/Down and OK buttons to enter the date and time (24hr clock) to stamp onto your footage. Once you have finished use the Menu button to save and return to the Settings Menu.
Auto LCD Off	Off/1/3/5 Minutes	Auto Screen Saver setting determines the amount of time before the display screen turns off. (KPT-1240 will keep on recording even the display is Off). Default: 1 Min
Keypad Sound	On/Off	Mutes Key button beeps. Default: On
Language	Select Language	Select Menu Language. Default: English

SETUP MENU CONT'

Menu	Select Settings	Description
License Plate	Input License Plate	Input your car number plate and it will be watermarked on the recorded footage. Up and Down Keys to change input. M Key to select next. OK Key to exit.
Alert	Speed Camera, School Zone, Black Spot, Redlight Camera, Railway crossing	To turn on selected alerts. Default: All alerts are On
School Zone Alert Time	AM 00:00 - 00:00 PM 00:00 - 00:00	School zone alerts will only work in the selected time period.
Alert Audio	On/Off	To turn off of Alert Audio. Alerts will still be visual displayed. Default: On
Flicker	50Hz / 60 Hz	Screen Hz setting. Default: 50 Hz
Storage	Displays the storage space on SD card in different default folders.	Displays the storage space on SD card.

SETUP MENU CONT'

Menu	Select Settings	Description
Format	Cancel/Ok	Format the inserted Micro SD Card, deleting all photos, videos and data.
Default Setting	Cancel/Ok	Restore factory settings.
Version	Displays the installed firmware version	Displays the installed firmware version.

10.4 PHOTO MODE

To enter Photo Mode

1. Press the OK Button to STOP Recording
2. Press and hold the Menu Key to enter in Photo Mode
3. Press again to enter Photo Mode Settings



1. Photo Mode
2. Captured images remaining in memory
3. Resolution
4. Picture Sharpness
5. SD Card
6. Battery charging status
7. ISO
8. White Balance
9. Exposure

Menu	Select Settings	Description
Resolution	12 M / 10M / 8M / 5M / 3M / 2M / 1.3M and VGA	Higher resolution gives your Photos more detail but uses more storage space. Lower resolution saves storage space. Default: 12 MP
Quality	Normal / Fine / Super Fine	To select the sharpness of picture quality. Default: Fine
White Balance	Auto / Daylight / Cloudy/Tungsten / Fluorescent	To Select the picture options. Default: Auto
Colour	Colour / Black & White / Sepia	To Select the colour options. Default: Colour
ISO	Auto / 100 / 200 / 400	To change the AUTO setting. Default: Auto
Exposure	Settings is same as what is set in Video mode	To change exposure settings Please go into video mode - explained in previous section.

11.0 VIDEO/PHOTO PLAYBACK

Long press M button twice to switch playback mode, the playback icon will be shown on the LCD top left corner:

1. Press the Up/Down button to select the file (Video/Photo) to Play back
2. Press OK button to Play/Pause.
3. Press Up/Down to Zoom in or Zoom out.
4. Press the M button for options: Delete, Protect or Slide Show.
5. Press Up/Down button to select and press OK to confirm.



- | | |
|---------------------------------|-------------------|
| 1. File Name | 6. Battery Status |
| 2. File recorded resolution | 7. Pause/Stop |
| 3. SD Card | 8. Forward |
| 4. Date stamp of recorded video | 9. Rewind |
| 5. Time of recorded video | 10. Play |

12.0 SOFTWARE PLAYBACK

The Inbuilt GPS unit will record your vehicles speed and GPS location for playback alongside your footage when viewed on a computer.

To play back the GPS footage, Please download the player from www.kapturecam.com.au/product/kpt-1240 and run it on your windows player.

To view images from Dash Camera, you will need to remove the Micro SD Card and transfer the files to you computer using a Micro SD Card Slot or compatible USB adapter.

Once files have been transferred to your computer, please select the folder and select the file you wish to view or playback.



13.0 INSTALLING APP ON SMART PHONE

Please download the KPT-1240 App from the Google Play Store or Apple App Store depending on your mobile device.

After successfully downloading and installing the app on your mobile. Search for KPT-1240-XXXX (the last 4 digit are unique to each dash camera) WIFI connection and connect it on your mobile device by entering password "12345678".

Open the app and sync it with the DVR, this allow you to access your the videos and app settings.

14.0 WARRANTY TERMS & CONDITIONS

Our goods come with guarantees that cannot be excluded under the Australian Consumer Law. You are entitled to a replacement or refund for a major failure and for compensation for any other reasonably foreseeable loss or damage. You are also entitled to have the goods repaired or replaced if the goods fail to be of acceptable quality and the failure does not amount to a major failure.

This warranty is provided in addition to your rights under the Australian Consumer Law. Directed Electronics warrants that this product is free from defects in material and workmanship for a period of 12 months from the date of purchase or for the period stated on the packaging. This warranty is only valid where you have used the product in accordance with any recommendations or instructions provided by Directed Electronics.

This warranty excludes defects resulting from alterations of the product, accident, misuse, abuse or neglect. In order to claim the warranty, you must return the product to the retailer from which it was purchased or if that retailer is part of a National network, a store within that chain, along with satisfactory proof of purchase. The retailer will then return the goods to Directed Electronics.

Directed Electronics will repair, replace or refurbish the product at its discretion. The retailer will contact you when the product is ready for collection. All costs involved in claiming this warranty, including the cost of the retailer sending the product to Directed Electronics, will be borne by you.

**Directed Electronics Address: 44 Translink Drive, Keilor Park
Victoria 3042**

Ph: +61 03 8331 4800 | Email: service@kapturecam.com.au





YOUR EYEWITNESS ON THE ROAD™



All Images, Information and Content are Copyright © 2019
Directed Electronics Australia Pty Ltd. All Rights Reserved.
www.kapturecam.com.au | www.kapturecam.co.nz

DIRECTED
AUSTRALIA & NZ

www.directed.com.au
www.directed.co.nz